

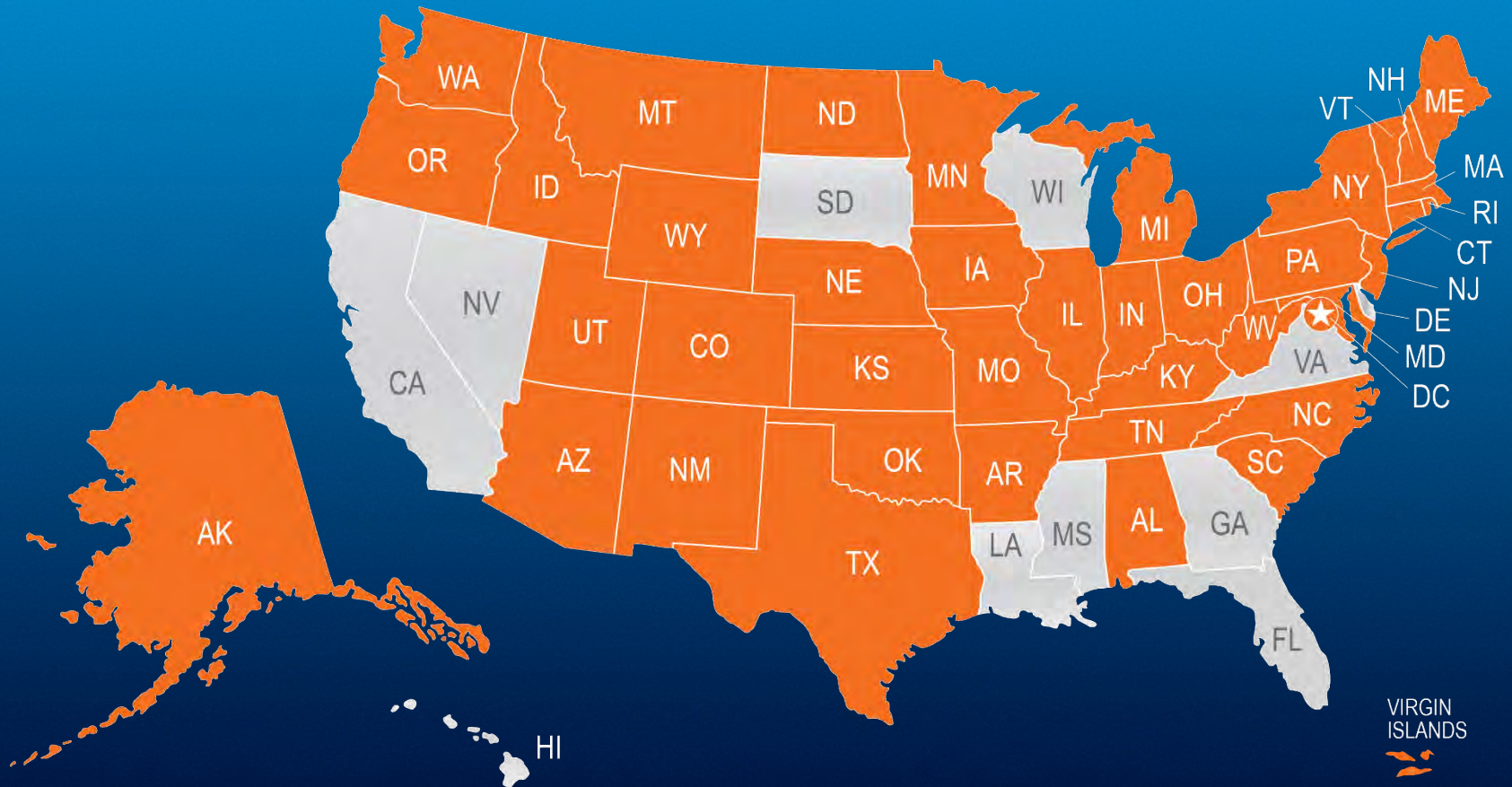


Understanding the Uniform Bar Examination

NCBE National Conference
of Bar Examiners

Jurisdictions that Have Adopted the UBE

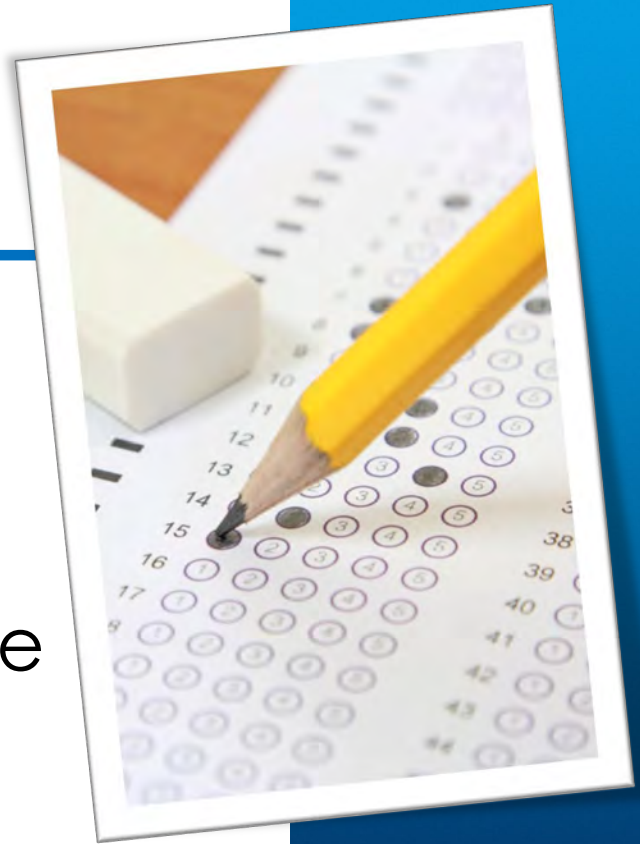
(as of January 6, 2022)*



***The following jurisdictions will begin administering the UBE for the first time as noted:**
Michigan (February 2023) and Pennsylvania (July 2022)

What Is the UBE?

- It is a uniformly administered, graded, and scored bar examination that results in a portable score, not a portable status.
- Applicants who take the UBE may transfer their scores to seek admission in other UBE jurisdictions within a certain amount of time after the scores were earned.



Purpose of the UBE

The UBE tests knowledge of general principles of law, legal analysis and reasoning, factual analysis, and communication skills to determine readiness to enter legal practice in any jurisdiction.



UBE Test Components

Multistate Performance Test (MPT)

Two 90-minute items (3 hours)

Content: a simulated case file presented in a realistic setting and calling for the test candidate to demonstrate fundamental lawyering skills regardless of the area of law in which the task arises

Multistate Essay Examination (MEE)

A common set of six 30-minute essays (3 hours)

Subjects: the 7 MBE topics plus Business Associations, Conflict of Laws, Family Law, UCC Art. 9 (Secured Transactions), and Trusts & Estates

Multistate Bar Examination (MBE)

200-question, multiple-choice exam (6 hours)

Subjects: Contracts, Constitutional Law, Criminal Law and Procedure, Evidence, Real Property, Torts, and Civil Procedure

Test Development Process

- NCBE's drafting committees are composed of professors from 30+ law schools and lawyers and judges from around the country who are experts in the subjects.
- Committees are staffed by NCBE test editors who are also lawyers.
- External professors and practitioners review MBE questions for validity and fairness.
- All questions are pretested before use.
- Jurisdictions review MEE and MPT before use.

Test Development Process

For more details, read articles published in NCBE's [*Bar Examiner*](#) magazine describing NCBE's test development process:

- [How Are Questions Written for NCBE's Exams? Part One: Two Multiple-Choice Question Drafters Share the Process](#)
- [How Are Questions Written for NCBE's Exams? Part Two: Two Written-Component Question Drafters Share the Process](#)
- [The Testing Column: Writing, Selecting, and Placing MBE Items: A Coordinated and Collaborative Effort](#)
- [MBE Test Development: How Questions Are Written, Reviewed, and Selected for Test Administrations](#)
- [MEE and MPT Test Development: A Walk-Through from First Draft to Administration](#)

UBE Subjects and Skills Tested

For the scope of coverage of subjects and skills tested on the UBE, see the following on the NCBE website's preparing pages for the [MBE](#), [MEE](#) and [MPT](#):

- MBE Subject Matter Outline
- MEE Subject Matter Outline
- MPT Skills Tested

NCBE Free Study Aids

Free study aids available on the NCBE website's preparing pages for the [MEE](#), [MPT](#) and [MBE](#) include

- recent MEE questions
- previously administered MEE questions and model analyses
- summaries of recent MPTs
- previously administered MPTs and Point Sheets
- sample MBE questions

NCBE BarNow Online Study Aids

Study aids are available on **BarNow**, NCBE's eLearning platform:

- MBE Practice Questions and Simulated Practice Tests
- MPRE Simulated Practice Tests
- MEE Practice Questions by Subject Area or Intact by Administration
- MPT Practice Questions by Objective/Persuasive Tasks or Intact by Administration
- Value Packs, including "The Everything Pack" (best-selling study aid)

Visit [NCBE Study Aids Store](#) to learn more.

UBE Test Day Schedules



Tuesday Sessions

- MEE (6 essays, 3 hours)
- MPT (2 items, 3 hours)

Wednesday Sessions

- MBE (100 questions, 3 hours)
- MBE (100 questions, 3 hours)

Students Benefit from UBE

- increases consistency in subjects tested on the bar exam across jurisdictions
- maximizes job opportunities—UBE scores that are failing in the testing jurisdiction are transferable to UBE jurisdictions that have a lower passing score requirement
- reduces actual costs and opportunity costs of preparing for and taking the bar exam in multiple jurisdictions

Profession Benefits from UBE

- acknowledges a shared core of legal knowledge and lawyering skills
- assures a high-quality, uniform system of assessment of minimum competence
- recognizes the reality of multi-jurisdictional or cross-border practice



NCBE's Role in the UBE

- develops the MEE, MPT, and MBE
- scores the MBE
- calculates scaled written scores (MEE and MPT) for jurisdictions
- serves as the central repository for UBE scores and performs all UBE score transfers
- serves as coordinating body for UBE administrative policies agreed upon by the jurisdictions

Role of UBE Jurisdictions

- establish their requirements for admission
- set their passing scores
- administer the UBE and grade the MEE and MPT
- set their maximum age for transferred UBE scores
- make character and fitness decisions
- make testing accommodations decisions
- administer a separate jurisdiction-specific law component if they deem necessary

Jurisdiction-Specific Law

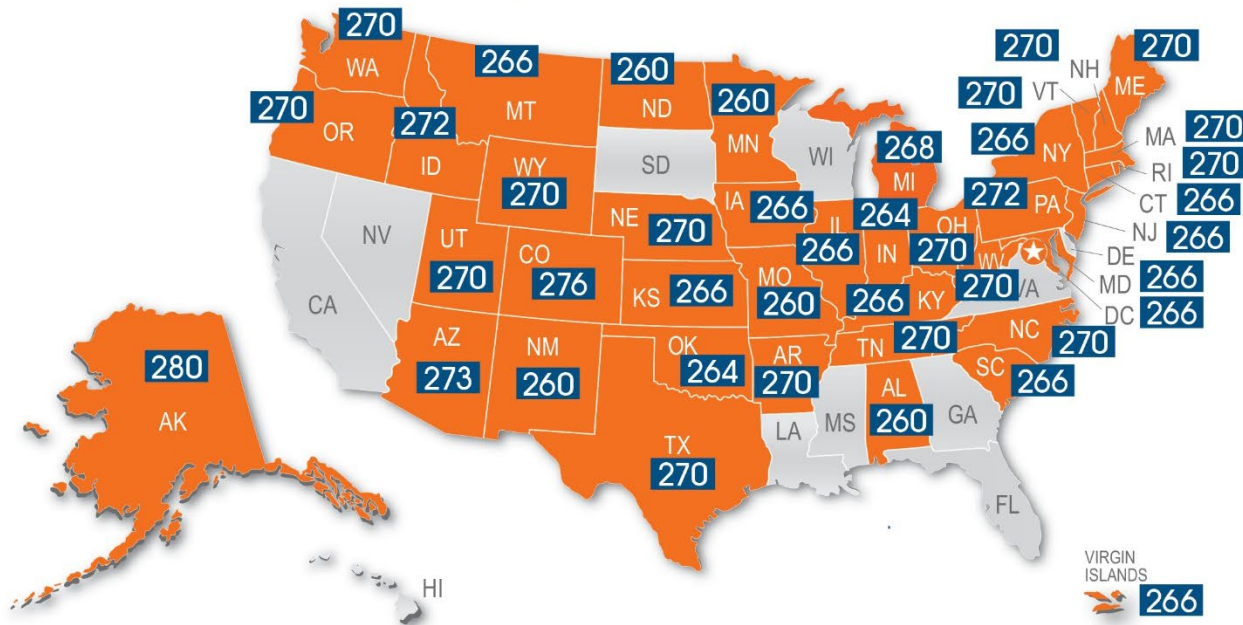
- UBE jurisdictions may require completion of a course, test, or some combination of the two that is separate from the UBE.
- Completion may be required before admission or within a prescribed period after admission.
- If required, jurisdiction-specific components typically must be completed by all applicants whether they are testing locally or transferring in UBE scores.

Admission by Transferred Score

To transfer UBE scores to seek admission in another UBE jurisdiction, applicants must:

- submit the prescribed application forms and fee to the jurisdiction;
- submit a request to NCBE for an official UBE transcript to be sent to the jurisdiction (see [UBE Score Services](#));
- satisfy the jurisdiction's character and fitness and other admission requirements; and
- complete jurisdiction-specific law component(s), if required.

Minimum Passing UBE Scores



260

Alabama
Minnesota
Missouri
New Mexico
North Dakota

264

Indiana
Oklahoma

266

Connecticut
District of Columbia
Illinois
Iowa
Kansas
Kentucky
Maryland
Montana
New Jersey
New York
South Carolina
Virgin Islands

268

Michigan

270

Arkansas
Maine
Massachusetts
Nebraska
New Hampshire
North Carolina
Ohio
Oregon
Rhode Island
Tennessee
Texas
Utah
Vermont
Washington
West Virginia
Wyoming

272

Idaho
Pennsylvania

273

Arizona

276

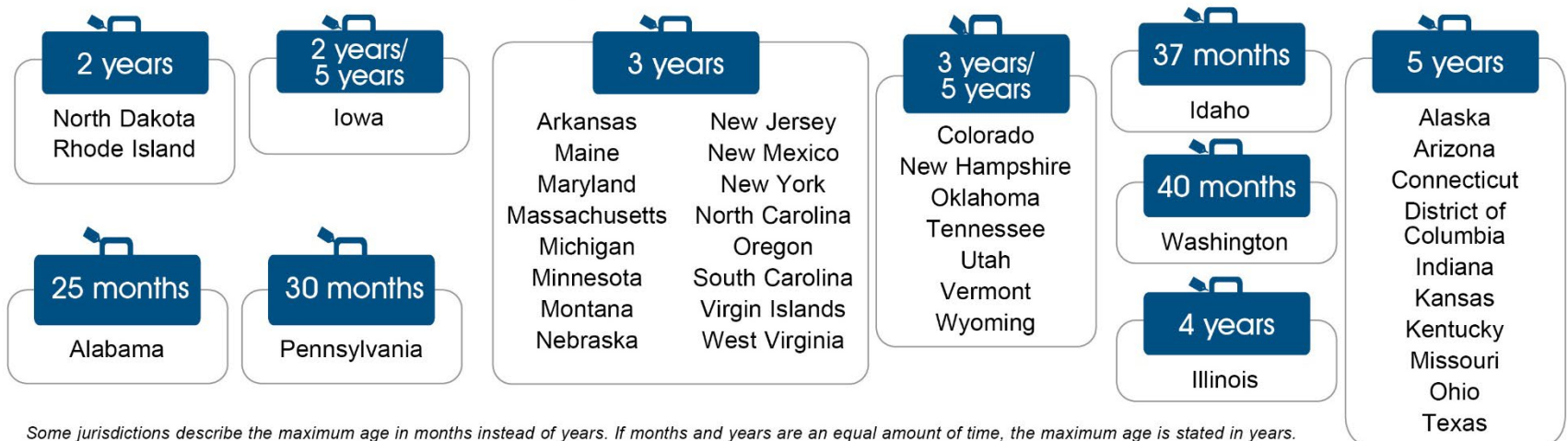
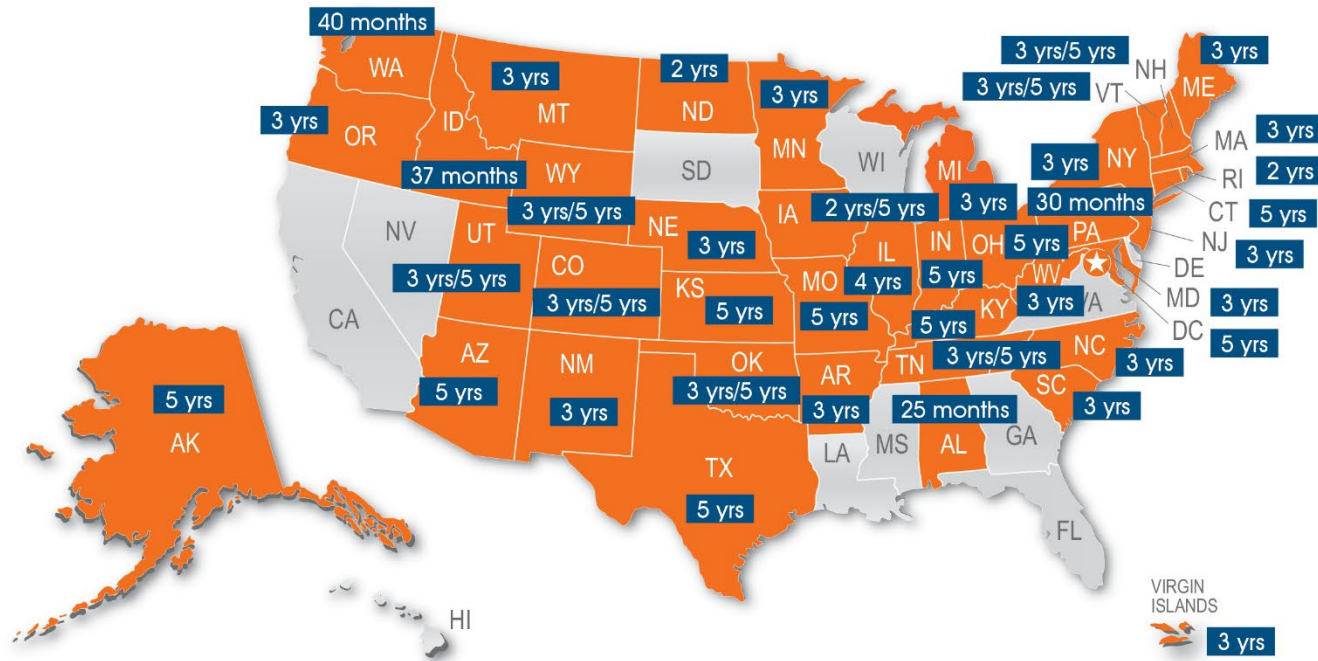
Colorado

280

Alaska

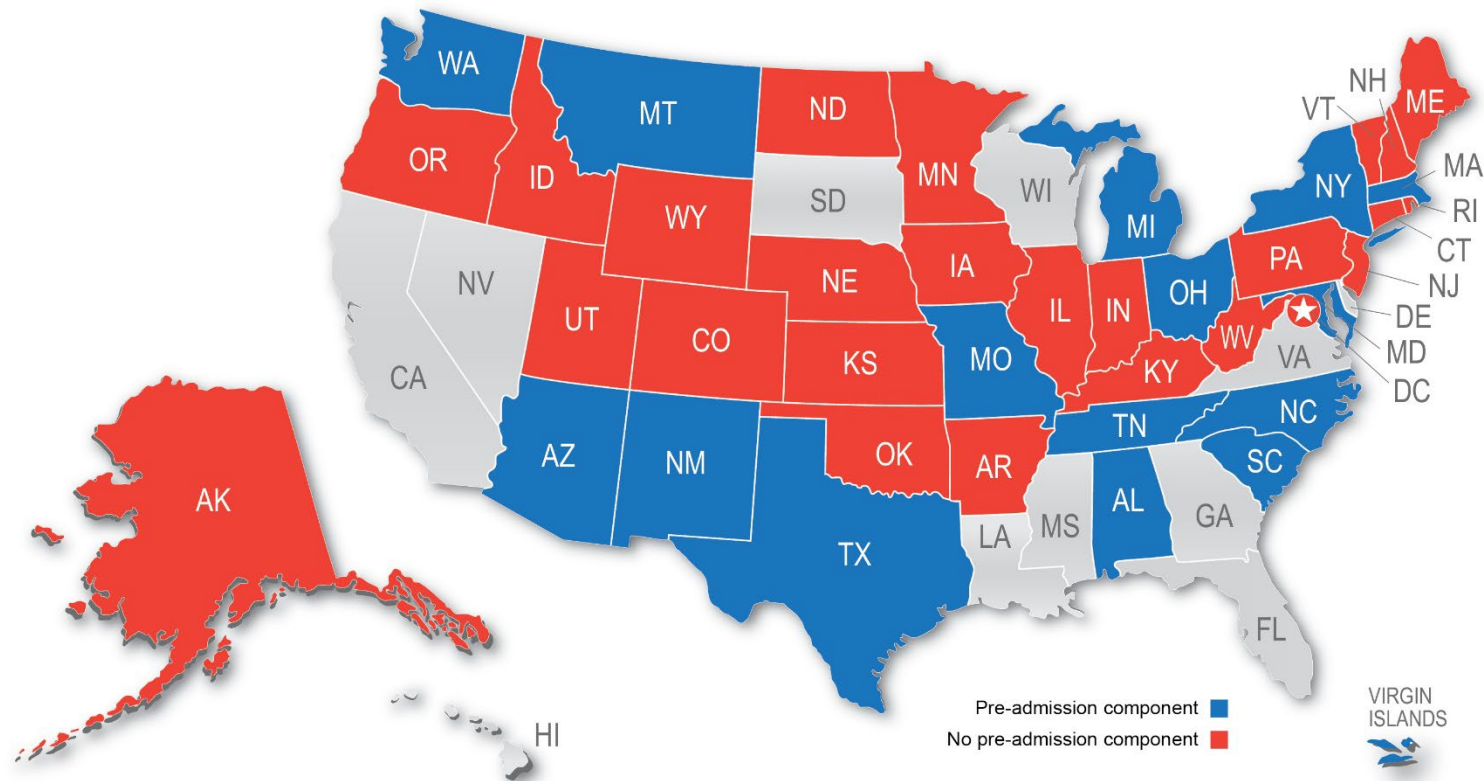
A score that does not meet the minimum passing score in the testing jurisdiction may be portable to another jurisdiction if the score is at or above the level required in the receiving jurisdiction.

Maximum Age of Transferred UBE Scores



Some jurisdictions describe the maximum age in months instead of years. If months and years are an equal amount of time, the maximum age is stated in years.

UBE Pre-Admission Jurisdiction-Specific Law Components



- **Pre-admission component:**

Alabama, Arizona, Maryland, Massachusetts, Michigan,
Missouri, Montana, New Mexico, New York, North Carolina,
Ohio, South Carolina, Tennessee, Texas, Virgin Islands,
Washington

- **No pre-admission component:**

Alaska, Arkansas, Colorado, Connecticut, District of Columbia, Idaho, Illinois, Indiana, Iowa, Kansas, Kentucky, Maine, Minnesota, Nebraska, New Hampshire, New Jersey, North Dakota, Oklahoma, Oregon, Pennsylvania, Rhode Island, Utah, Vermont, West Virginia, Wyoming

UBE Pre-Admission Jurisdiction-Specific Law Components

Pre-admission:

- **Live course:** New Mexico
- **Online course:** Alabama, Arizona, Michigan, Montana, New York, North Carolina, South Carolina, Tennessee, Texas
- **Online open-book multiple-choice test:** Maryland, Massachusetts, Missouri, New York, Ohio, Virgin Islands, Washington

Questions regarding the Uniform Bar Examination should be submitted through our online [Help and Support](#) or by telephone at 608-280-8550.

Since jurisdiction rules and policies change, you are strongly advised to [consult the jurisdiction's bar admission agency](#) directly for the most current information.

